

Instructions for Installing GruvenParts.com Billet Oil Filter Housing Cover for Fiat 500 1.4L Engines

This product is intended to replace Chrysler/Fiat Part Number 048-928-50AA (04892850AA). Please check the OEM part number of your oil filter housing cap before ordering. You can do this easily by calling your dealer and giving them your VIN # and asking them to tell you the part number for your oil filter housing cap.

In order to install the GruvenParts.com Billet Oil Filter Housing Cover in your Fiat 500 1.4L Engine, you will need to swap over the small oil bypass valve located in the base of the plastic OEM cap. The purpose of the bypass valve is to allow oil to pass unfiltered into the engine in the event of a total oil filter clog. If you do not install this bypass valve into the filter housing cover, your oil will NOT get filtered, as it will simply bypass the filter element.

YOU MUST INSTALL THE BYPASS VALVE BEFORE RUNNING THE ENGINE.

Step 1 :

Orient the OEM plastic filter housing cover such that you are looking down into the bore. Notice the spring loaded bypass valve in the base of the cap.



Step 2 :

Push the bypass valve fully to 1 side (doesn't matter which) in order to deflect the retaining tab to unseat the valve. A click will be heard and the bypass valve and spring will become separated from the OEM plastic filter cover. Remove the bypass valve and spring.



Step 3 :

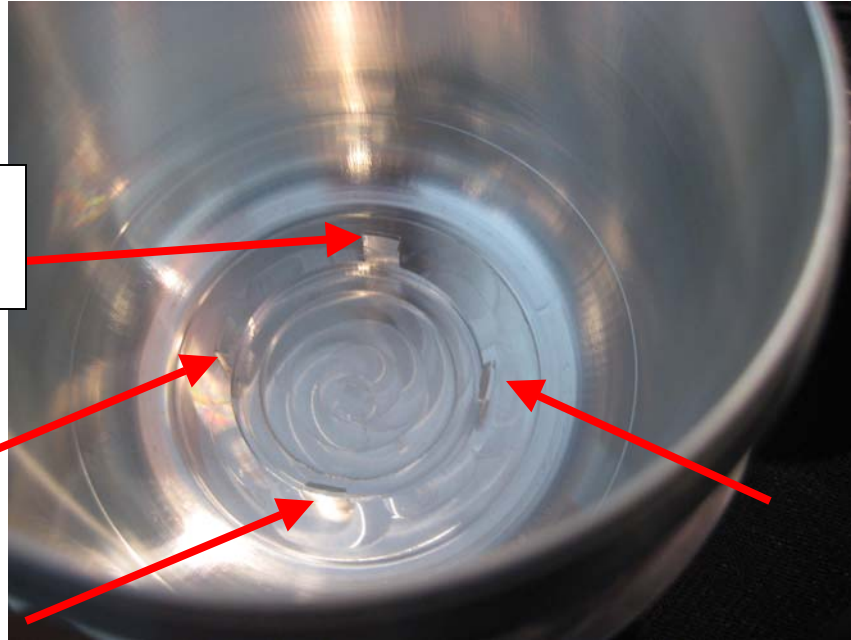
Place spring in the GruvenParts billet oil filter housing cover in the center at the base. There is a small recessed area to position the spring exactly in the center of the base.



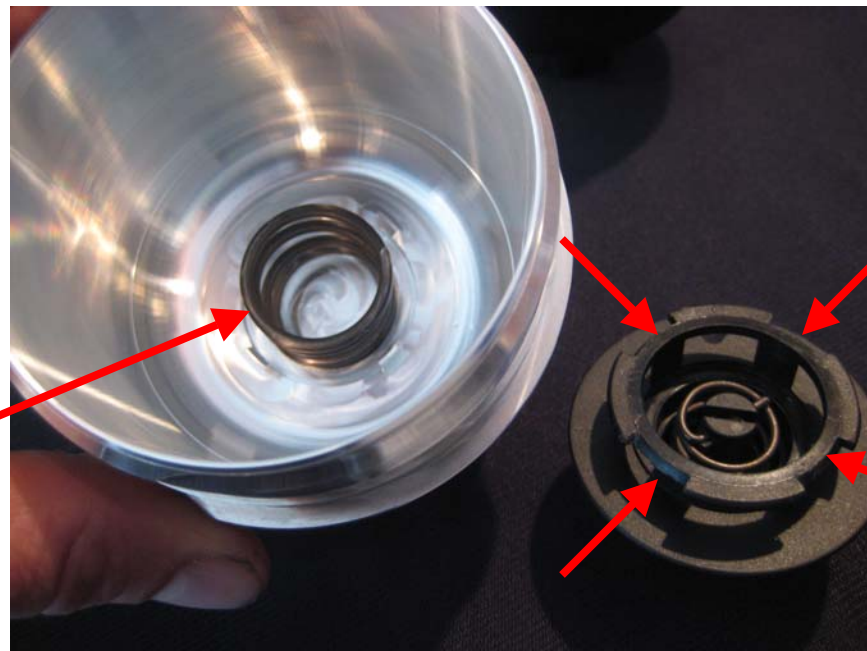
Step 4 :

Notice the 4 tabs at the base of the GruvenParts billet oil filter housing cover with the hook section towards the inside. These 4 hooks are what mate with the plastic bypass valve. The plastic bypass valve needs to be oriented such that its cut outs align with these hooks.

**4
mounting
hooks**



**Spring
Centered
in base**



**4 Cut Outs
to align with
hooks**

Step 5 :

Once the spring is placed in the base of the billet cap, place the bypass valve over the spring with the nipple section facing up and align such that the cut outs in the bypass valve are aligned with the hooks in the billet cap base (see picture above).

Once aligned properly, push straight down on the bypass valve until a click is heard, and the bypass valve is seated on the hooks. You can use a metal cylindrical object, such as a deep well socket to assist pushing the bypass valve down onto the billet cap hooks.

Once seated, do not remove the bypass valve, as the hooks dig into the plastic valve landing and removal could damage the bypass valve seat area.

Once installed, the bypass valve should not come loose unless fully deflected to 1 side.





Step 6 :

Install oil filter into the bypass valve by firmly pushing down on the filter with tabs on filter aligning with the bypass valve (just like you would install the filter on an OEM plastic cap). Install O-ring onto the billet filter cap and lubricate with a film of oil. Clean all mating threads and lubricate with fresh engine oil. Torque billet oil filter housing cap + filter onto the engine at 25-30 NM.

