

Driver's Side Mirror Repair

**These instructions pertain to the 2014-2018 GM Sierra trucks with the standard power fold mirrors (not tow).

Tools Needed:

T20 Torx

T10 Torx

Long reach skinny flat blade screwdriver

Paint scraper

Trim tool

Hammer

Small Punch

Slide a paint scraper or trim tool under the mirror cover and pull outward to remove the bottom latches. To remove the top latches, start from the area closest to the door and push the cover out away from the vehicle. Slowly wiggle the cover and the latches should remove while pulling out.



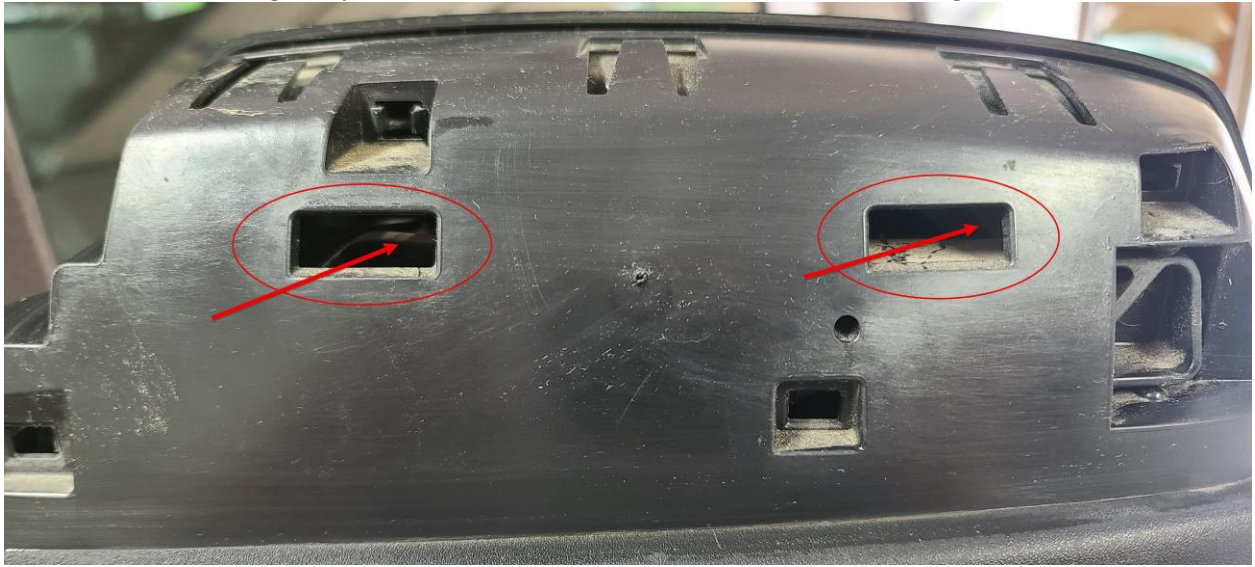
Latches are located by the red circles



Tilt the mirror glass all the way down to provide the best angle to attack the top latches of the glass



To remove the mirror glass, you will need to look into these two holes at the angle shown



Using a flat bladed screwdriver you want to use twisting action to leverage the glass up off the hooks.

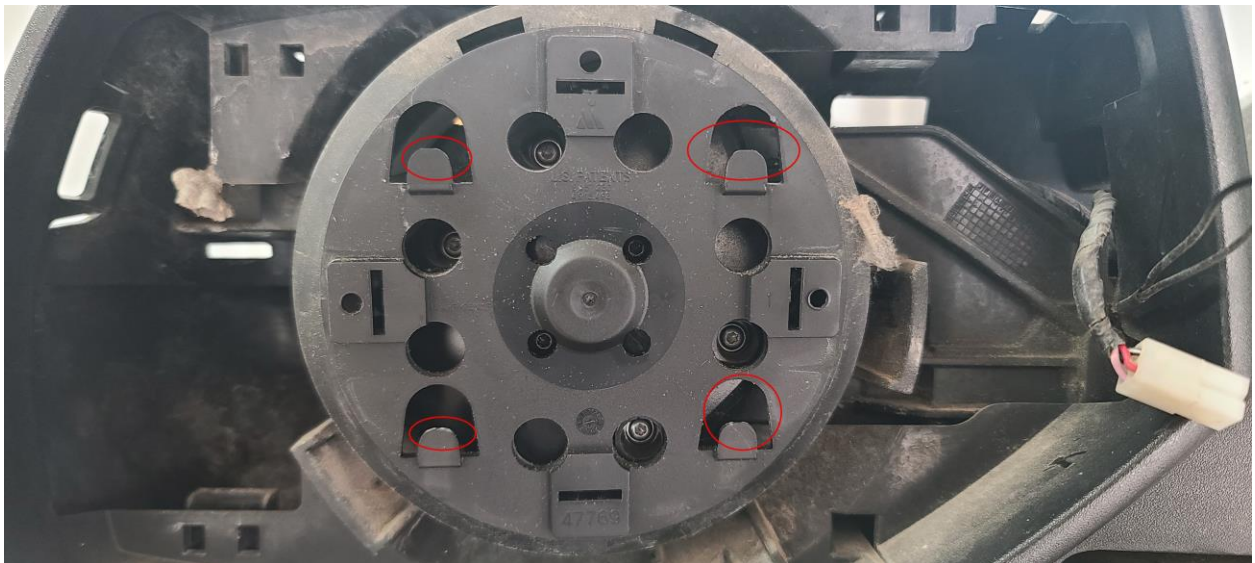




Once you remove the second latch, keep your hand close to the glass to catch it

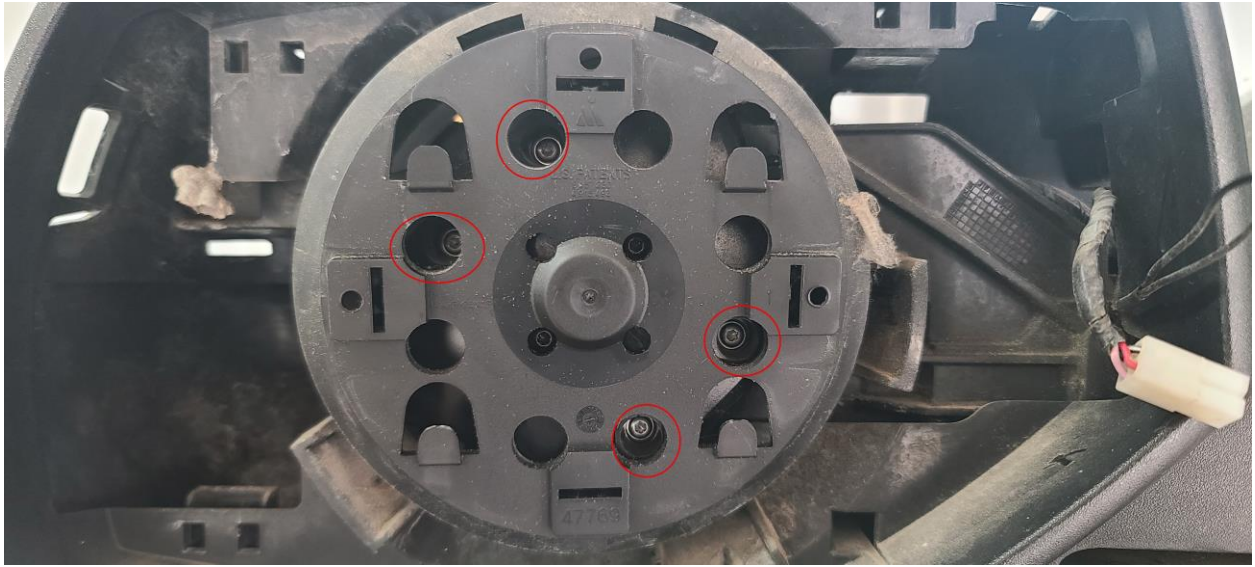


Glass hooks to these 4 latches



Remove the wiring for the turn signal and the heated glass element. I find it easier to grasp the metal tabs for the heater element with an angled pair of needle nose pliers and use a small screwdriver to pry off the connectors using leverage. You don't want to break the tabs.

Remove the 4 T10 torx screws to remove the mirror motor



Unlatch these 3 connections to remove the inner plastic shroud







The 3 latches closest to the motor disconnect pretty easily with a trim tool and some wiggling





Unlatch the mirror puddle light and remove the connections



The back cover is held on by 2 latches and slides over the rigid mirror frame through the opening labeled with the arrow

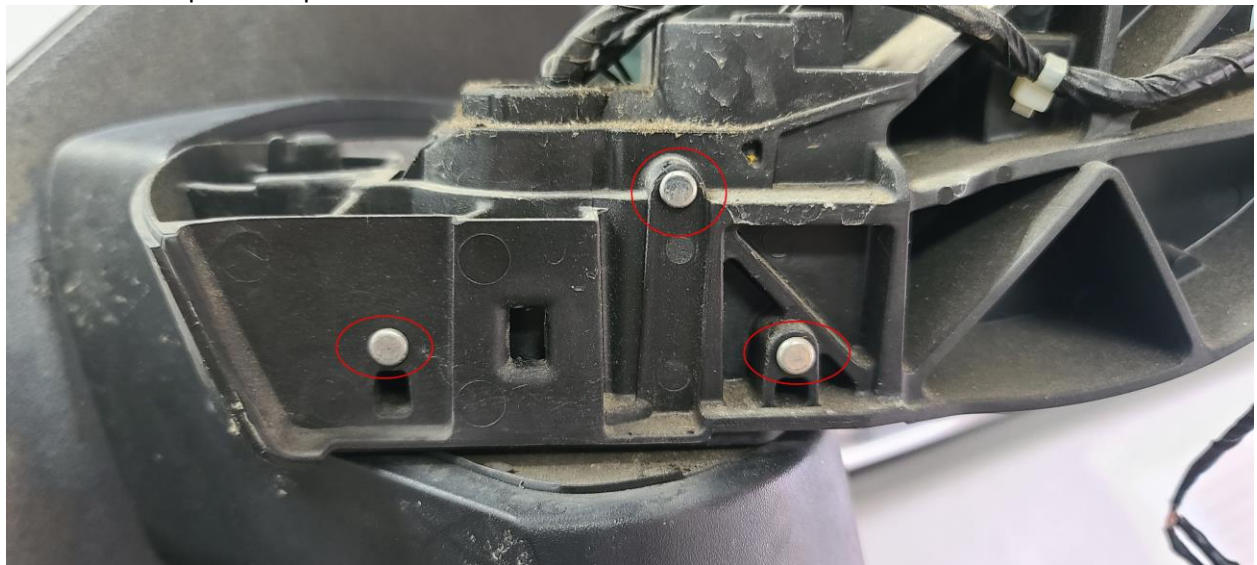


A trim tool and some wiggling will release the latches closest to the mirror motor

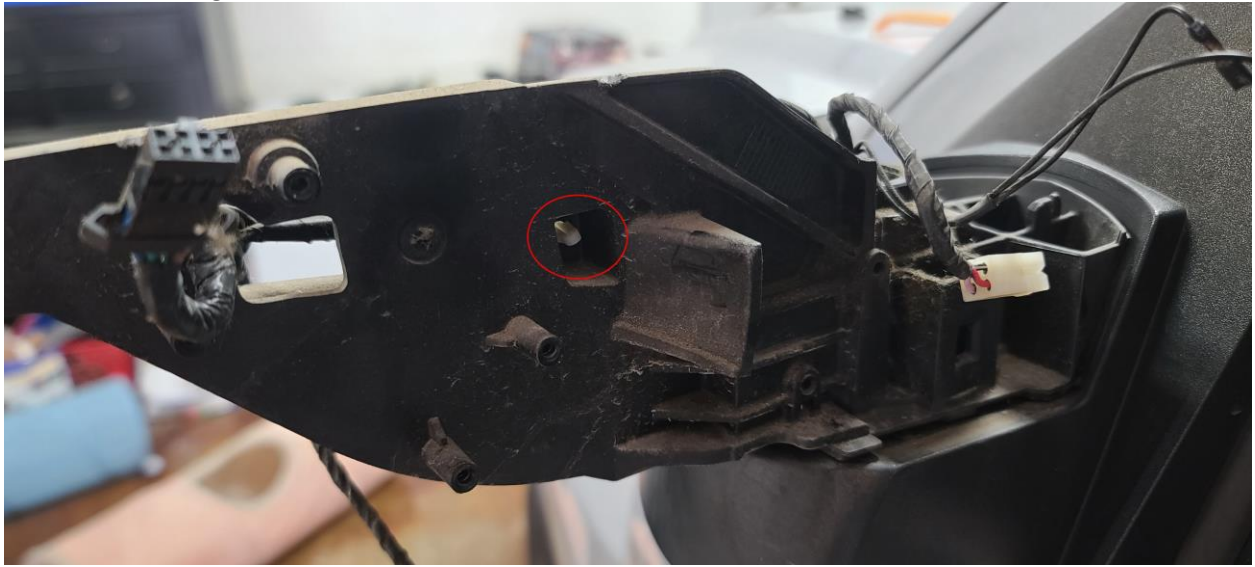




Remove frame pins with punch and hammer



Unlatch the wiring harness retainer



Remove the motor connector



Slide the wiring through the plastic frame being careful not to bend up the motor connector pins

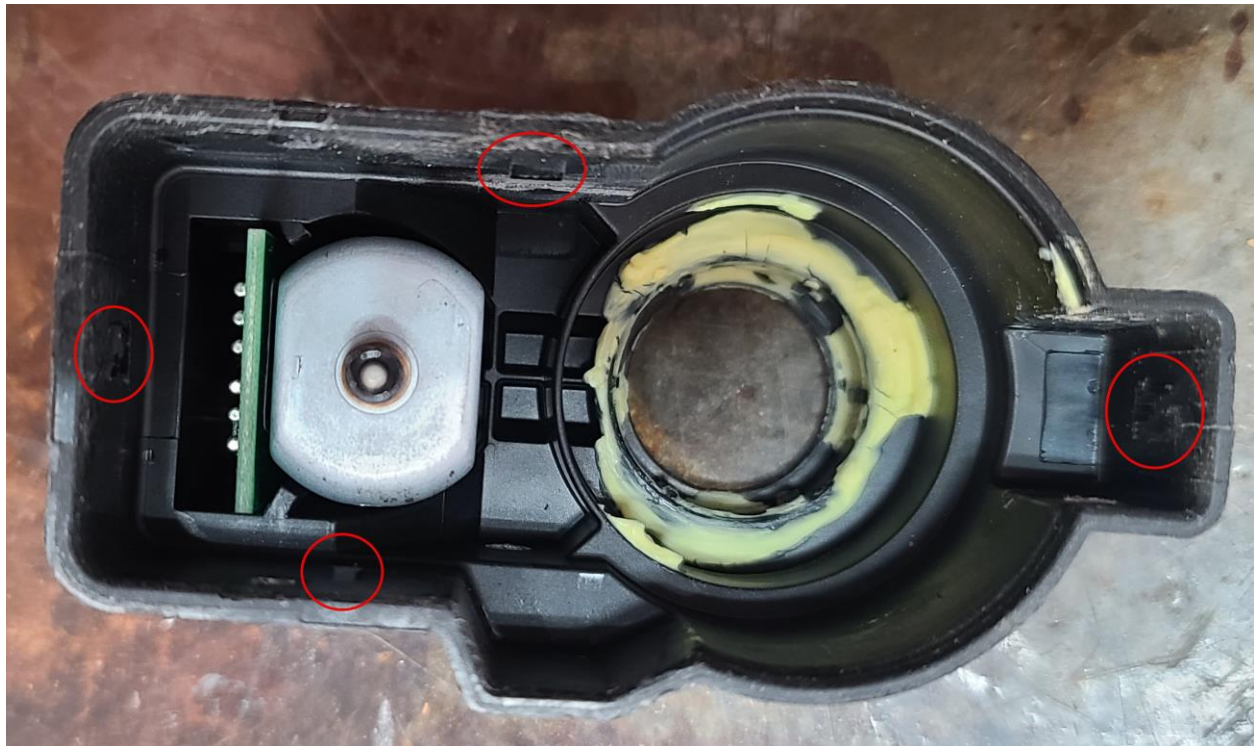


Note the location of the square in the lower motor housing in relation to the motor position and mirror mount





The motor cover is plastic and held on by 4 latches. I find it easier to clamp the lower motor mount in the vice and use small screw drivers to gently lift the latches while pulling upward



Carefully remove OEM circuit board/motor and install the new GruvenParts motor into OEM circuit board.

Complete the lower case rebuild instructions to install the replacement metal gear using the instructions here by referencing this link :

https://www.gruvenparts.com/content/PDF/GruvenParts_Folding_Mirror_DIY.pdf

Follow steps 9-12 (pages 16-25). Not that the collet orientation on the 2014-2018 Sierra may be different than the DIY referenced. Please seat the collet on the base such that it goes all the way down, and take note of that orientation using a Sharpie to ensure it gets installed in correct orientation.

I was able to replace the motor and gear with no other modifications. There was no grinding required that is discussed in the 2007+ mirror repair instructions.